

AIR Quality Monitor

PRO-IAQ
Pro-IAQ Limited
專業室內空氣質素有限公司



PRO-IAQ

Air Quality Monitor

www.pro-iaq.com

EMPOWERING ESG INITIATIVES WITH IAQ MONITORING

In today's rapidly evolving corporate landscape, Environmental, Social, and Governance (ESG) considerations play a pivotal role in establishing a company's commitment to sustainable development. Pro-IAQ Air Quality Monitor stands as a powerful tool in assisting businesses to embrace ESG principles through effective Indoor Air Quality (IAQ) monitoring.



Enhancing Environmental Responsibility



Pro-IAQ Air Quality Monitor enables companies to uphold the environmental dimension of ESG by actively monitoring indoor air quality parameters. By ensuring optimal IAQ, businesses can significantly reduce their environmental footprint, mitigating the impact of pollutants and enhancing overall air quality for employees and stakeholders.

Promoting Employee Health and Well-being



Addressing the social aspect of ESG, the detector contributes to the well-being of a company's most valuable asset – its workforce. By maintaining healthy indoor air environments, businesses showcase their dedication to employee health, safety, and productivity. Improved IAQ supports lower absenteeism rates and fosters a positive workplace culture.

Meeting Governance Standard Responsibility



Incorporating IAQ monitoring aligns with governance requirements within ESG frameworks. Pro-IAQ Air Quality Monitor aids in adhering to regulations and industry standards related to indoor air quality. Companies can proactively demonstrate their commitment to transparency and accountability in maintaining a conducive working environment.

Data-Driven Sustainability Strategies



IAQ monitoring not only provides real-time insights into air quality but also generates valuable data for informed decision-making. By analyzing trends and patterns, businesses can tailor sustainability strategies to address specific IAQ concerns, contributing to a more comprehensive ESG agenda.

The integration of Pro-IAQ Air Quality Monitor into corporate operations exemplifies a proactive approach to ESG implementation. By ensuring healthier environments, reducing environmental impact, and adhering to governance standards, businesses can strengthen their ESG profiles while fostering a culture of sustainability and responsibility. As businesses embrace IAQ monitoring, they solidify their commitment to a brighter and more sustainable future.

APPLICABLE SCENARIO

OFFICE ENVIRONMENT

In modern office spaces where employees spend a significant portion of their day, ensuring a healthy and comfortable indoor environment is crucial. Pro-IAQ Air Quality Monitor is an ideal solution to maintain a conducive workspace.

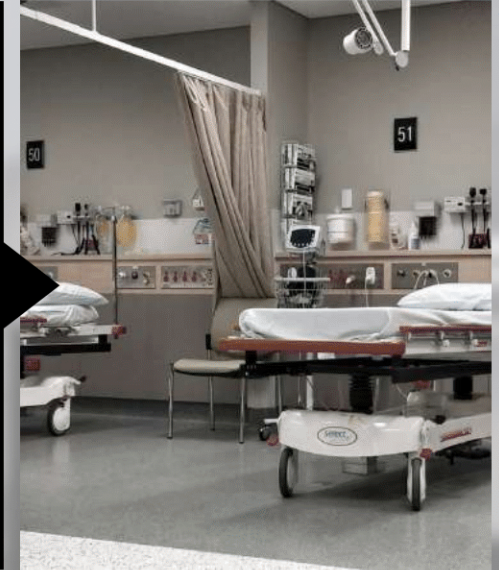
Real-time Monitoring
Customizable Alerts
Data Insights



MEDICAL ENVIRONMENT

In healthcare settings such as hospitals and clinics, maintaining clean and uncontaminated air is crucial for patients' well-being and staff safety. Pro-IAQ Air Quality Monitor plays a vital role in ensuring an environment.

Occupational Safety



SCHOOL ENVIRONMENT

In educational institutions, students' well-being and academic performance are linked to the quality of their surroundings. Pro-IAQ Air Quality Monitor promotes a conducive learning environment.

Health Awareness
Optimal Learning Conditions
Remote Accessibility



SHOPPING MALL ENVIRONMENT

Large commercial spaces like shopping malls can experience varying levels of air pollutants due to high foot traffic and diverse activities. Pro-IAQ Air Quality Monitor ensures a pleasant shopping experience for visitors.

Visitor Comfort
Tenant Satisfaction
Emergency Preparedness



COMPREHENSIVE DATA COVERAGE

Pro-IAQ Air Quality Monitor is designed to provide comprehensive data coverage, offering accurate insights into various critical parameters that determine the quality of indoor air. With advanced sensors and real-time monitoring capabilities, this device ensures a safer and healthier environment across different settings.

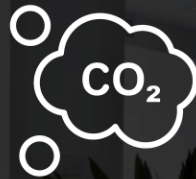
BASIC AIR PARAMETERS



Temperature



Humidity



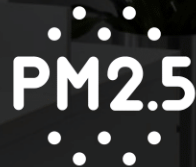
Carbon Dioxide



TVOC



Formaldehyde

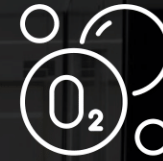


PM2.5

OPTIONAL CHOICES*



PM10



Oxygen



Carbon Monoxide



Methane



Smoke



Hydrogen Sulfide

Pro-IAQ Air Quality Monitor offers a holistic view of these parameters, empowering users to make informed decisions about ventilation, purification, and air quality management. Its comprehensive data coverage is a cornerstone of promoting healthier, safer, and more comfortable indoor environments.

*If you wish to select optional air parameters, please contact our IAQ consultants.

EFFICIENTLY MONITOR YOUR IAQ WITH OUR DASHBOARD

Introducing our advanced ProAir Dashboard
– your comprehensive solution for managing air quality effectively.



Real-time Insights

Stay informed with real-time data directly from your devices. Monitor key air quality parameters instantly, enabling swift responses to any deviations.



Historical Analysis

Dive into historical data to track trends over time. Our dashboard empowers you to identify patterns and make informed decisions for long-term air quality improvements.



Cross-device Comparison

Compare readings across multiple devices effortlessly. This feature streamlines your assessment process, helping you maintain consistent air quality standards throughout your space.



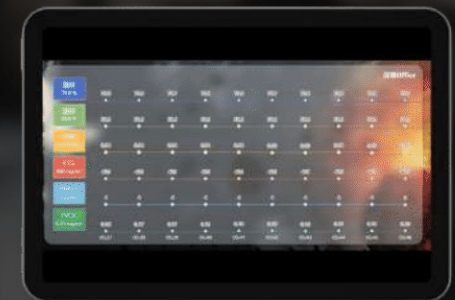
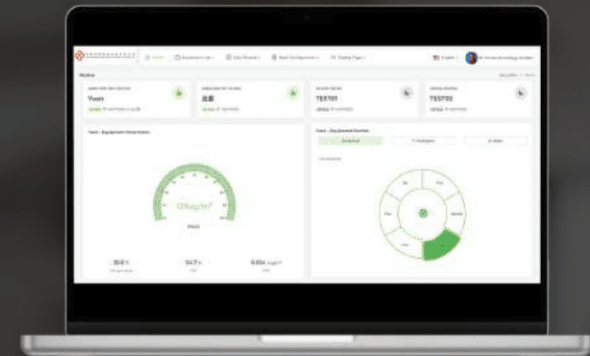
Raw Data Export

Need to conduct in-depth analysis? Export raw data for further examination. This capability is particularly useful for research, compliance reporting, or internal audits.



Raw Data Export

Our dashboard isn't just functional – it's visually insightful. Utilize informative graphs to visually represent air quality data. These graphs can be projected onto larger screens, making them perfect tools for presentations on air quality awareness and health initiatives.



Seize the power of data-driven decisions with our IAQ dashboard. Elevate your air quality management strategy and create healthier environments for everyone. For detailed instructions and guidance, please refer to the user manual or visit our website.

MANAGE YOUR AIR WITH OUR DASHBOARD



SEAMLESS INTEGRATION WITH THE ENVIRONMENT

Pro-IAQ Air Quality Monitor boasts a minimalistic, neutral design that seamlessly blends into any setting. With its understated aesthetics, it effortlessly fits into various environments. Whether mounted on walls or ceilings, it provides complete coverage of your indoor space, harmonizing with the surroundings flawlessly.



PRODUCT SPECIFICATIONS

Supply Voltage	:	12-24VDC (with power adapter 220VAC)
Operating Current	:	Average around 200mA, peak around 300mA
Signal Outputs	:	RS485, WIFI
Air Intake Method	:	Natural diffusion
Enclosure Material	:	Aluminum alloy and ABS plastic
Mounting Options	:	Wall-mounted or ceiling-mounted
Mounting Screws	:	Installation screw holes follow an 86-type box layout
Wiring Method	:	Backside wiring with 6-pin terminal connector
Overall Dimensions	:	130mm×130mm×35mm
Operating Environment	:	-10-50°C; 0-95%RH (non-condensing)
Storage Environment	:	-20-60°C; 0-100%RH (non-condensing)

OUR Contact

Get in touch with Us!



+852 2682 0366



info@pro-iaq.com



www.pro-iaq.com



Unit 205, 2/F, 16W, Hong kong Science Park, Shatin N.T.,
Hong kong